

# Brith Services Ltd

Hague House, 2 Sewardstone Road, Waltham Abbey, Essex EN9 1NB

W: [www.brithservices.co.uk](http://www.brithservices.co.uk) T: 01992 768831

## Welcome Back

We would like to welcome you all back into the New Year! We hope you all had a lovely Christmas break and feel refreshed ready to start 2020 working hard on some new upcoming projects and continuing to work towards completing existing!

Thank you to those of you who came to our Christmas work do at Flight Club! We had a really great evening and well done to the winners! (Obviously the best team won!)

## Inside this Issue

- ❖ Welcome 2020
- ❖ Staff News
- ❖ Projects
- ❖ Plumstead Library
- ❖ H&S On Site
- ❖ Celebrity Lookalike



## Staff News

We would like to welcome Ben Mills to the Brith team. He is our new Project Manager who will be managing New Bond Street for Geoffrey Osborne which is currently underway.

Congratulations and well done to Dean Fahy who was awarded 'Operative Safety Award' by Roof Limited for his hard work at St John's Church. Keep up the good work!



We have a newbie in the office who you may be familiar with! Eli has gone from apprentice to plumber to junior estimator! Eli has joined Alan and Oliver in the estimating department and working hard to secure future projects.

Congratulations to Paul Hill and family on the arrival of their new baby girl! We hope she is giving you all plenty of much needed sleep!

## **Projects**

2019 was a busy year and everyone worked hard on getting these projects finished:

- Acland Burghley School – Buxton Building Contractor's
- Abbey View School – Morgan Sindall
- Piries Place Car Park – Kier Construction
- Dulwich Prep School Phase 2 – Life Build Solutions Ltd
- Brentwood School – Roof Limited
- Bickley Park School – Baxall Construction
- Hampstead School – Diamond Build
- Eaton House Schools – Baxall Construction

We look forward to starting another very busy year with the following projects coming up and working hard towards getting these completed on time:

- 123 & 124 New Bond Street – Geoffrey Osborne
- Oakington Manor Primary School – Life Build Solutions Ltd
- Southborough Hub – Baxall Construction
- Queen's Head Pub – Buxton Building Contractors Ltd
- Amersham School – Morgan Sindall
- St Peters in the Forest Church – Roof Ltd
- Gilbert Inglefield Academy – Morgan Sindall
- UCL Pearl - VolkerFitzpatrick

## Pipework at Plumstead Library

Please see below what pipe fitting looks like for those plumbers amongst you who are only used to using 15mm copper and plastic!



## Health & Safety on Site

We all have a duty of care for ourselves and others! Please make your manager aware if there are any concerns you have if you notice anything that is not right.



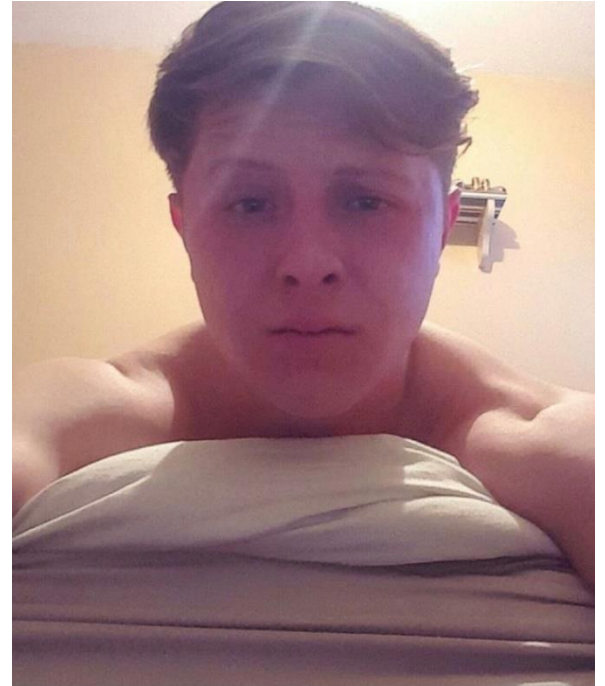
These 2 (not Brith) are a good example of a health and safety hazard! Accident waiting to happen.

James' recent hospital visit where he required stitches after an accident with a Stanley knife!



## Celebrity Lookalikes!

The Singer vs The Plumber – Can you tell the difference?



It has become apparent that we have ourselves a famous face on our sites! Once you see it you can't un-see it!

James and Lewis separated at birth!